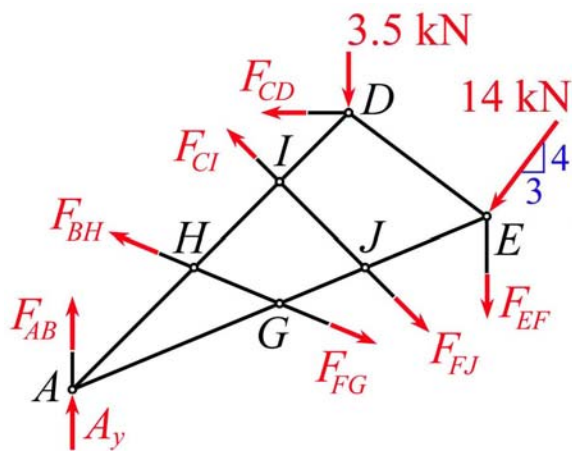
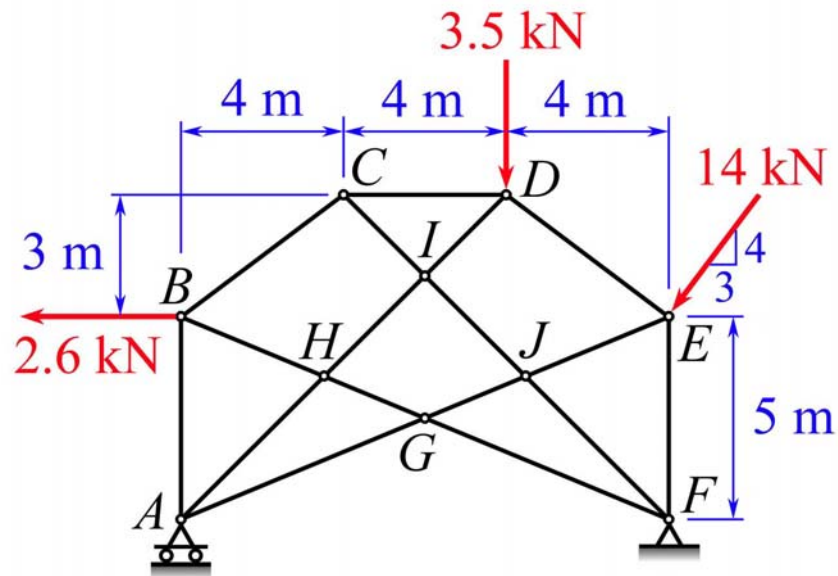


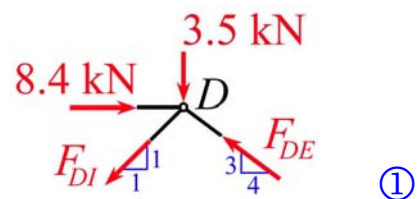
**Quiz #8.** A compound truss is loaded as shown. Determine the forces in members  $CD$ ,  $DE$ , and  $AH$ .



By *X-joint properties* and *rigid-body principle*, we may neglect the pair of forces  $F_{BH}$  and  $F_{FG}$ ,

as well as the pair of forces  $F_{CI}$  and  $F_{FJ}$ , in the *FBD*. ①

$$F_{CD} = 8.4 \text{ kN (C)} \quad \textcircled{2}$$



$$F_{DE} = 8.5 \text{ kN (C)} \quad \textcircled{2}$$

$$F_{AH} = F_{DI}$$

$$F_{AH} = 2.26 \text{ kN (T)} \quad \textcircled{2}$$